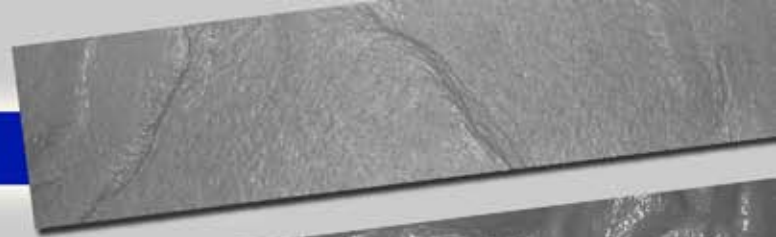
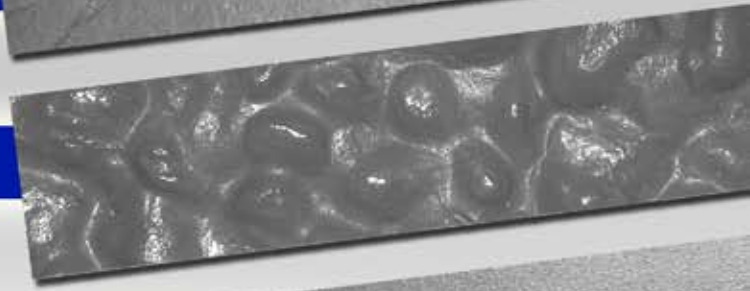


Slate :: No. 16002



Pebble :: No. 16004



Heavy Sandblast :: No. 16006

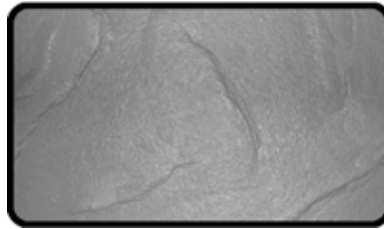


SLATE PATTERNS

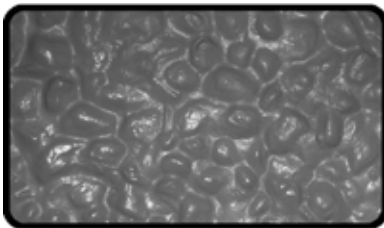
FFI 16001 ::
Light/Medium Sandblast
Size: 10' x 4'
Depth: 1/8"



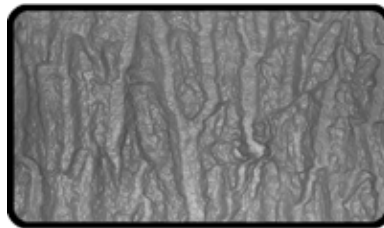
FFI 16002 :: Slate
Size: 10' x 4'
Depth: 3/8"



FFI 16004 :: Pebble
Pebble Size: 1"
Depth: 1/2"



FFI 16005 :: Fractured Granite
Depth: 3/4"



FFI 16006 :: Heavy Sandblast
Depth: 3/8"

